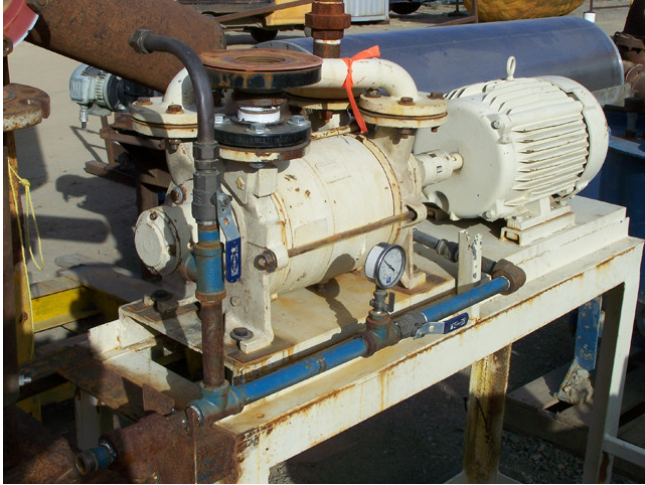


Travaini Vacuum Pump. 1.5 in. Mounted on Common Frame.
Driven by 10 HP Motor.
[Inventory ID #45506]



Travaini Vacuum Pump.

- Model TRHG 40-190/C/RA
- 1.5 inch inlet and discharge.
- Driven by 10 HP Motor.
- 230/460 volt, 1760 RPM.
- 215T Frame.
- All Mounted on Common Steel Frame.