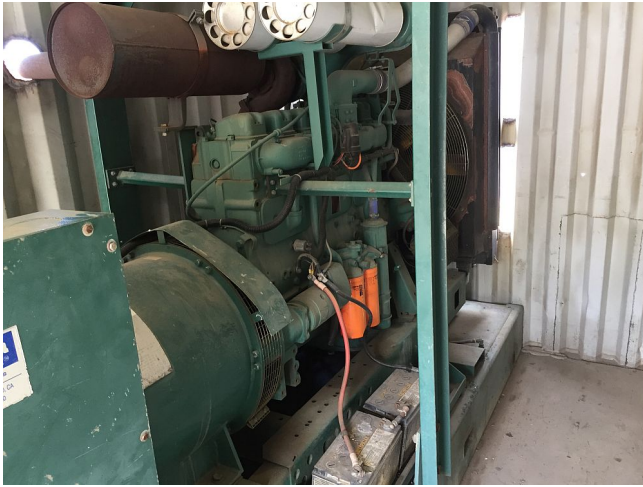


## [Volvo Penta 320 kW Generator](#) **[Inventory ID #166184]**



- TAD 1231- 6 Cylinder diesel engine.
  - Turbo charged.
- Marathon Electric AC Generator.
  - 330 KW continuous duty.
  - 413 KVA.
  - 480 volt, 60 hz, 3 phase.
  - 1800 rpm.
- Mounted on sub frame with built in fuel tank.
  - Approx. 250 gallons.
- Generator output control panel.
  - 1300 hours
  - 400 main breaker disconnect.
- Complete with electrical distribution panel:
  - Consisting of:
    - 1 – 400 amp magnetic contactor with safety shut down.
    - 1 – 6' long 400 amp splitter box.
    - 1 – 100 fusible disconnect.
    - 8 – 30 amp disconnects.
    - 1 – ABB 20hp VFD.
    - 1 – 5 KVA 480 volt - 120/240 single phase transformer.
    - 20 circuit breaker panel.
- All mounted inside a 20 sea container.

View more [Diesel Generators](#)