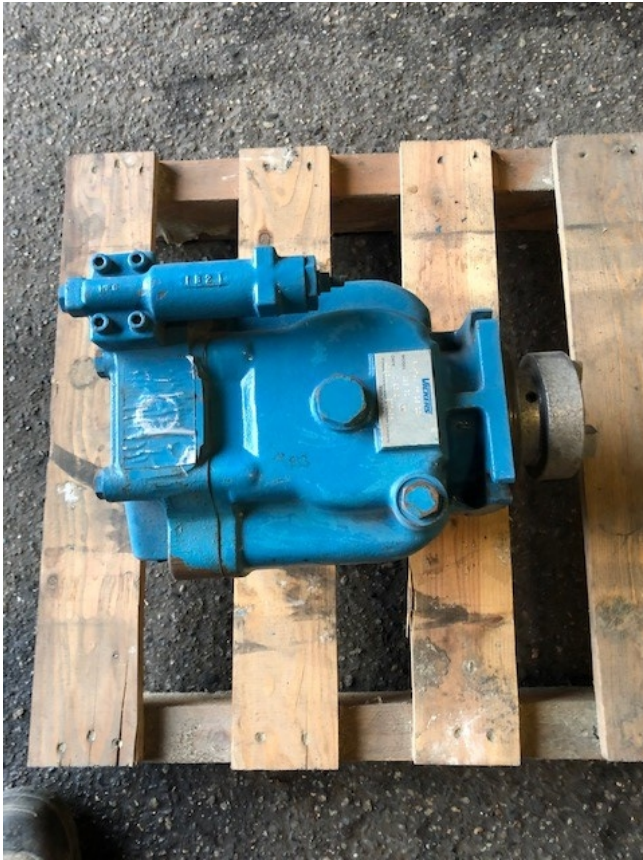


Vickers PVH74C C25 31 Piston Pump [Inventory ID #1210933]



Vickers PVH74C Piston Pump

- Make: Vickers PH74C RF 1S 10
- Model: C25 31
- Condition: New
- Max Geometric Displacement 74: 73.7 cm³/r (4.5 in³/r)
- Application Style: Mobile Application (Rated Speed & 250/280 bar (3600-4000 psi) Pressures)
- Mounting Flange, Prime Mover End: SAE "C" 4-Bolt Type (SAE J744-127-4)
- Shaft Rotation, Viewed @ Prime Mover End: Right Hand, Clockwise
- Configuration: Non-Thru-Drive (Single Pump)
- Main Ports: SAE 4-bolt Flange Ports (Standard)
- Shaft-End Type, @ Prime Mover End: SAE-C Straight Key
- Shaft Seal, Prime Mover End: Single, One-Way
- Max Pressure: 250 Bar (3625 PSI)
- Rated Speed: 2200 RPM
- Flow @ 28 bar (400PSI): 154.1 - 171 l/min (40.7 - 45.2 US GPM)
- Max. Flow Loss @250 bar (3625 psi): 13 l/min (3.4 US GPM)



P.O. Box 176, Savona, BC, Canada V0K 2J0
Phone: (250) 373-2424 Fax: (250) 373-2323
Website: savonaequipment.com
Email: sales@savonaequipment.com
Located just 20 minutes west of Kamloops, BC

- Location: Western Canada

View More [Piston Pumps](#)