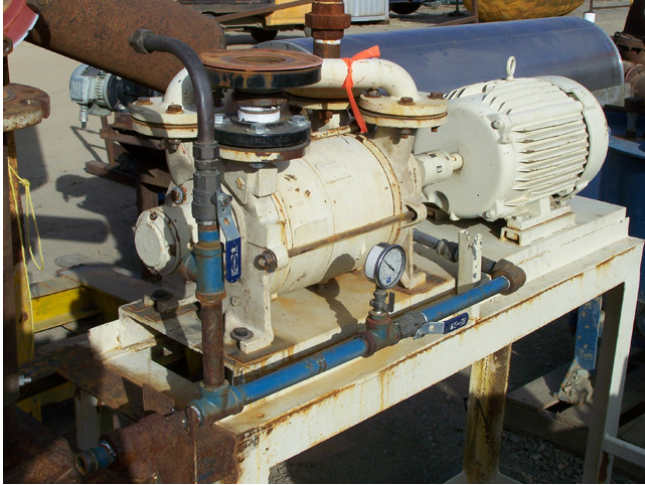


[Travaini Vacuum Pump. 1.5 in. Mounted on Common Frame.](#)  
[Driven by 10 HP Motor.](#)  
**[Inventory ID #45506]**



- Travaini Vacuum Pump.
  - Model TRHG 40-190/C/RA
  - 1.5 inch inlet and discharge.
  - Driven by 10 HP Motor.
  - 230/460 volt, 1760 RPM.
  - 215T Frame.
  - All Mounted on Common Steel Frame.

[View Spec Sheet Below](#)