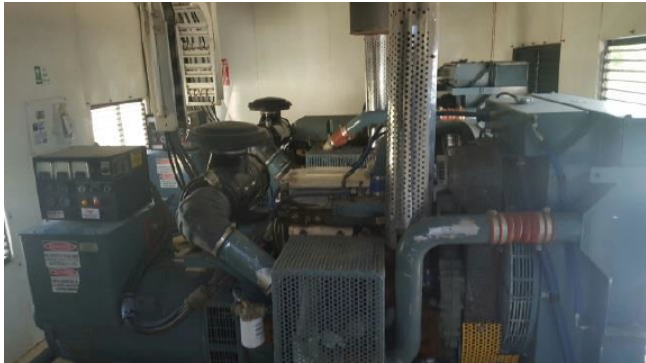


Stamford 350 kW Diesel Generators

[Inventory ID #290318]



- 350 kW
- 600 Volt Prime Power x 2
- Twin Detroit Diesel 12.7 Liter Tier II
- Model: HC434D
- Muffler
- Average 6000 Hours
- Donaldson Air Cleamer
- Manual Start-Stop Controls
- Safety Shutdowns
- Block Heater
- Circulation Pump
- Installed in a 30 ft. x 12 ft. Weather Enclosure on a Rig-Skid
- Manual Transfer Switch
- 7000 Liter Fuel Tank with
 - Containment Tank
- Mandoors
- Heating Lighting
- Air Intake
- Exhaust Louvers
- Completed with:
 - 50 kVA Transformer
 - 600 - 208/120 Volt
- Location: Western Canada

View more [Diesel Generators](#)