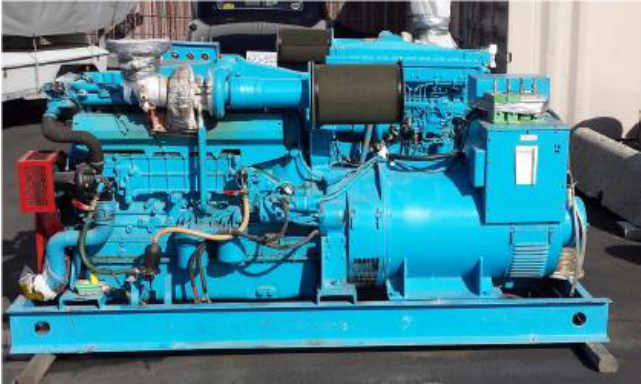


## [Stamford 250 kW Diesel Generator](#)

**[Inventory ID #424394]**



- 208/120 Volt
- 250 kW Continuous
- 275 kW Standby
- 192 kW
  - Single Phase
- Mitsubishi S6D PTA Engine
- Stamford 12 Lead Generator
- CVR Radiator with
  - 10 HP Electric Motor Suitable for Remote Mounting
- Hour: 1,200
- Location: Eastern Canada

View more [Diesel Generators](#)