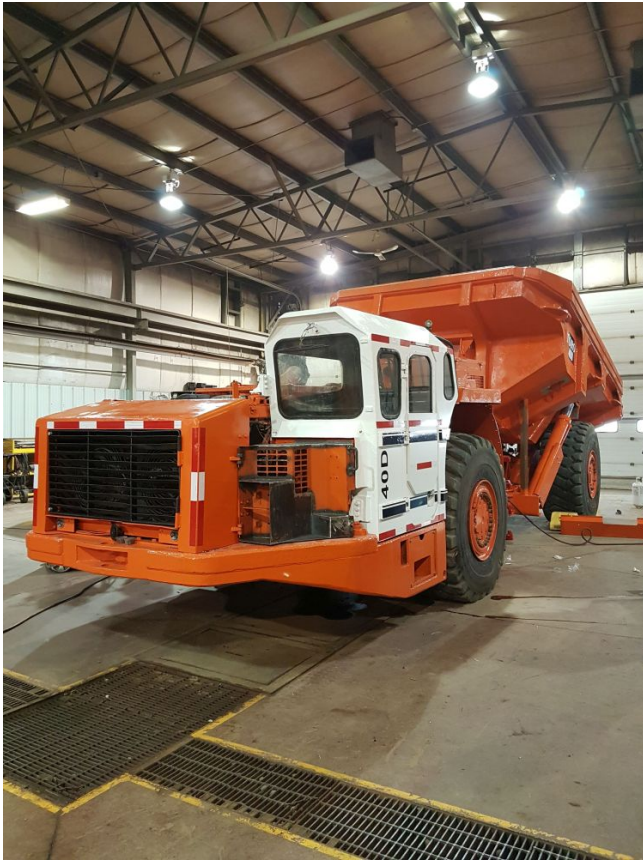


## Sandvik Toro 40D Underground Haul Truck

[Inventory ID #180321]



- **Dimensions:**
  - Total Length: 10,217 mm (402 in.).
  - Total Width: 2,990 mm (118 in.).
  - Height: 2,670 mm (105 in.).
  - Max. Height of the box: 2760 mm (109 in.).
- **Weights:**
  - Operating Weight: 30,700 kg (67,700 lb).
  - Total loaded weight 70,700 kg (155,900 lb).
  - Axle weights without load:
    - front axle 22,200 kg (49,000 lb).
    - rear axle 8,500 kg (18,700 lb).
  - Axle weights with load:
    - front axle 33,400 kg (73,600 lb).
    - rear axle 37,300 kg (82,200 lb).
- **Capacities:**
  - Payload capacity: 40,000 kg (88,125 lb).
  - Box std.: 18.0 m<sup>3</sup> (24yd<sup>3</sup>).
- **Dump box movements:**
  - Discharging time: 13 sec.

- Dumping angle: 62°.
- **Frame:**
  - Rear and front frame: Welded steel construction.
  - Material: Raex 384 (St 52-3).
  - Central hinge: Box constructed, adjustable lower bearing.
  - Firewall.
- **Engine:** Detroit S-60 DDEC IV:
  - Diesel Engine.
  - Output: 354 kW / 2100 r/min (475 HP).
  - Torque: 2102 Nm / 1350 rpm.
  - Number of cylinders: in line 6.
  - Cooling system: water cooled.
  - Combustion principle:
    - Direct injected.
    - Turbo + inter cooler.
    - 4 stroke.
  - Air Filtering: Donaldson.
  - Exhaust System:
    - HTI covered exhaust manifold & Turbo
    - Double wall exhaust pipe
    - Catalytic purifier & muffle
  - Fuel Tank Capacity: 550 l (145 gal.)
- Dana SOH 8821 **Gearbox:**
  - Power shift transmission with electric remote shifting.
  - 8 forward gears.
  - 2 reverse gears.
- Dana axles.
- **Brakes:** Service and emergency brake are fully hydraulic.
  - Dana liquid cooled LCB.
- Ansul fire suppression system.
- Condition: Good, used.
- Box: conventional.
- ROPS/FOPS canopy meets CSA B352 standards.
- Year: 2006.
- Hours: 4100.

View more [Underground Trucks](#)