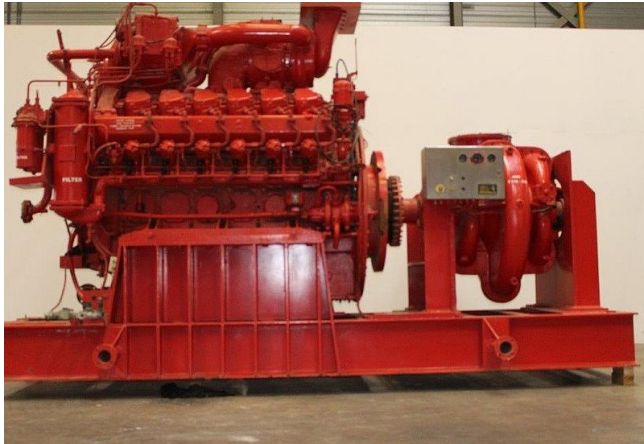


[Paxman 1680 kW Marine Engine](#) [Inventory ID #219586]



Manufacturer: PAXMAN

- Year: 1975.
- Power: 1680 kW.
 - Continuous duty.
- Type: 12RP 2000.
- Standby Duty 2250 HP.
- No additional hours of operating.
- Cylinders: 12.
- RPM: 1500.
- Fully reconditioned in 2016.
- Excellent condition.
- Location: Europe.

View more [Marine Engines](#)