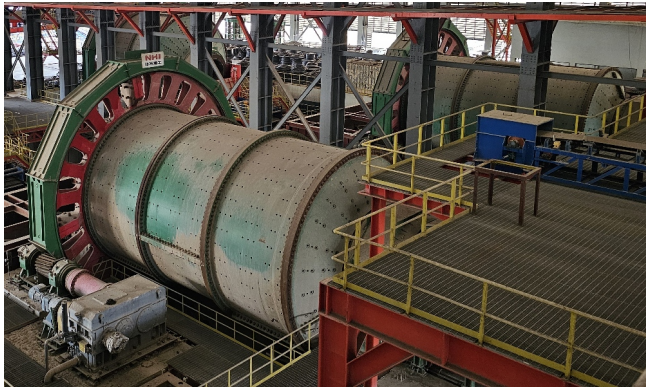


[New Surplus NHI 6.4m Dia. x 10m Long Ball Mill](#)

[Inventory ID #1504543]



NHI 6.4m Dia. x 10m Long Ball Mill

Quantity: 2 Units Available

- Make: NHI (Northern Heavy Industries)
- Type: Ball Mill
- Condition: New Surplus
- Complete Mills
- Mill Diameter: 6,400mm Dia. (21ft)
- Mill Length: 10,000mm (32.8ft)
- Mill Diameter (Inside Liners): 6,160mm (20.2ft)
- Effective Grinding Length: 10,000mm (32.8ft)
- Shell Effective Volume: 298m³
- Max Ball Charge (by Volume): 30%
- Normal Operating Speed: 12.6 RPM @74%Cs
- Drive: Electric Motor
 - Power Output: 8000kW
 - Frequency: 50Hz
 - Mill Motor Type: Squirrel-Cage and VFD

[See Complete Plant Listing Here to View Additional Available Equipment](#)

Read More About This Liquidation [Here](#)

View More [Ball Mills](#)