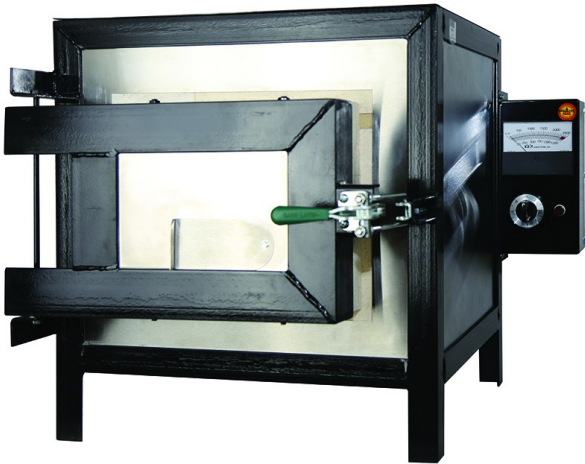


## [New Assay Electric Furnaces](#)

**[Inventory ID #58775]**



### New Assay Electric Furnaces - Front Loading Kilns

- 17 Models Available
- Kilns May Be Used For Any Media
- Interior Walls of 2300°F Insulating Fire Brick
- Solid Block Back-Up Insulation That Will Not Pack Down or Burn Out During Prolonged Use
- Plug Doors Insure Minimum Heat Loss
- Heavy Duty Hinges Prevent Sagging
- Solid Arch Plate Prevent Brick Dusting onto Ware
- Fast Firing at Low Amperage
- Complete with Pyrometer
- Infinite Switches to Allow Flexible Firing
- Pilot Lights Indicate when Kiln is On
- Electronic Temp Control Units Available at Additional Cost
  - *Temperature is maintained within 2 degrees using Automatic Control*

Model	Inside Dimensions			Outside Dimensions			Cubic Feet	Weight lbs.	Volts	Amps	Watts	Price	Crating
	W	D	H	W	D	H							
6	6"	6"	6.5"	14"	15"	23"	0.14	70	120	14	1440	\$1,732	\$59
9	9"	10"	6.5"	17"	19"	23"	0.34	95	120	15	1800	\$2,089	\$73
11	9"	10"	11"	17"	19"	27"	0.57	125	120	15	1800	\$2,241	\$90
12	12"	12"	6.5"	20"	21"	23"	0.54	130	120	15	1800	\$2,241	\$90
13	12"	12"	8"	20"	21"	24"	0.75	140	240	14	3600	\$2,402	\$90
16	16"	16"	11"	24"	25"	27"	1.40	190	240	20	4800	\$3,072	\$105
18	18"	25"	11"	26"	30"	27"	2.90	340	240	45	10800	\$5,353	\$105
21	20"	20"	8"	28"	30"	25"	1.90	230	240	24	5760	\$4,848	\$114
30	16"	16"	15.5"	24"	25"	32"	2.30	270	240	24	5760	\$4,937	\$114
40	16"	17"	20"	24"	26"	36"	3.10	370	240	36	7200	\$5,086	\$114
50	20"	20"	20"	28"	30"	49"	4.60	420	240	36	8640	\$5,390	\$124
60	20"	20"	24.5"	28"	30"	53"	5.50	520	240	48	11520	\$6,182	\$124
80	24"	24"	24.5"	42"	34"	52"	8	720	240	56	13440	\$9,895	\$228
100	24"	24"	30"	42"	34"	58"	10	850	240	70	15600	\$10,995	\$315
120	24"	24"	38.5"	42"	34"	66"	12.70	950	240	86	20640	\$12,985	\$315
150	28"	28"	33"	48"	48"	60"	15	1200	240	95	22800	\$19,525	\$315
200	38"	26"	35.5"	58"	46"	63"	20	1500	240	71	25680	\$21,450	\$315

- All Prices in U.S. Funds
- Location: Will Ship From California

View More [Assay Furnaces](#)