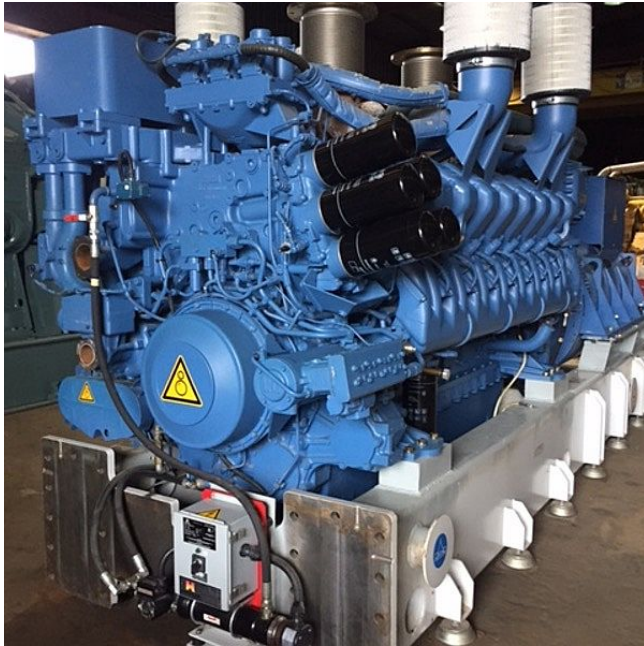


MTU-Marelli 2.2 MW Generator Package

[Inventory ID #177460]



- MTU diesel engine.
 - Manufactured in Germany.
 - Model: 16V400G83.
 - Year: 2008.
 - Certified to EPA Tier II standards.
 - Max. power: 3351 bhp @ 1800 rpm.
 - Power: 2,280 kW.
- Marelli generator/alternator.
 - Year: 2008.
 - Continuous duty type.
 - 2,250 kVA.
 - 480V.
 - 60 Hz.
- Deep Sea electronics.
 - Model: DSE8610.
 - Control mode.
 - Remote radiator.
- Units service history:
 - Preservation plan has been in place with these units since they have been decommissioned.
 - Plan includes:
 - Oil circulating pumps that cycle oil throughout the entire engine every 30 min, 24 hr/day.
 - This keeps all internal engine components lubricated.
 - Engine heaters kept running in order to maintain a desirable temperature

in the engine.

- Space heaters in the generator ends to keep the moisture levels extremely low.
 - Cooling system was filled with a special liquid and capped.
 - Rotated to prevent flat spots.
- Quantity: 2.

View more [Electrical Power Plants](#)