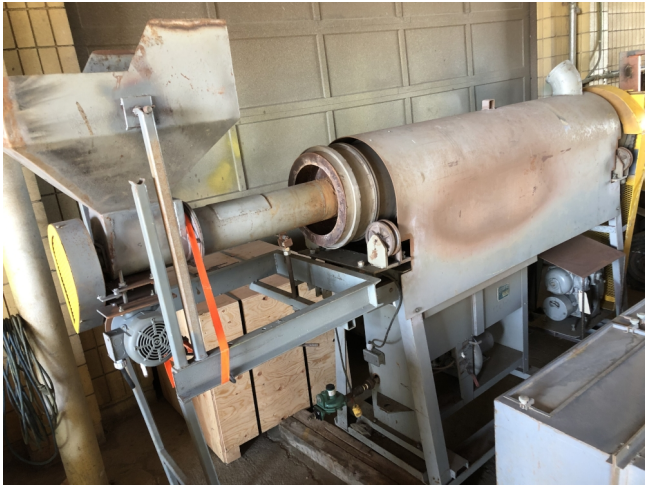


Johnson 16in. x 7ft. 6in. Gas Fired Dryer

[Inventory ID #406457]



- 16in. Dia. Drum
- 7ft. 6in. Long Drum
- Input: 400,000 BTU/Hour
- Variable Speed Main Drive for Dryer Drum
- Complete with
 - Feed Hopper with Screw Feed
 - 2ft. x 2ft. x 18in. Deep Hopper
 - 7in. Dia. Screw with
 - $\frac{3}{4}$ HP Motor
- Location: British Columbia, Canada

View More [Dryers](#)