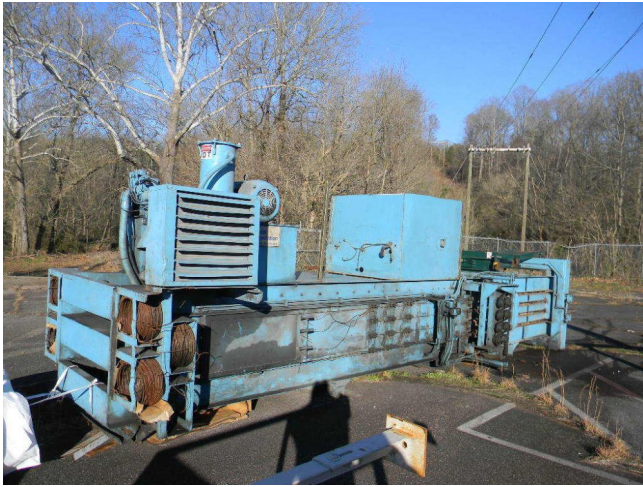

International Baler 4430-50 Recycling Compactor [Inventory ID #188265]



- Capacity: 6 TPH approximately.
- Horizontal auto-tie baler with infeed conveyor.
 - Model: 4430-50
- Feed Throat: 42 In. X 50 In. with 8 In. cylinder.
- Bale Size: 44 In. X 30 In. variable size.
- [50 HP Motor](#)
- Can process following materials: plastic, cardboard, paper, rags, newsprint, aluminum, tin, municipal solid waste.

View more [Waste Compactors](#)