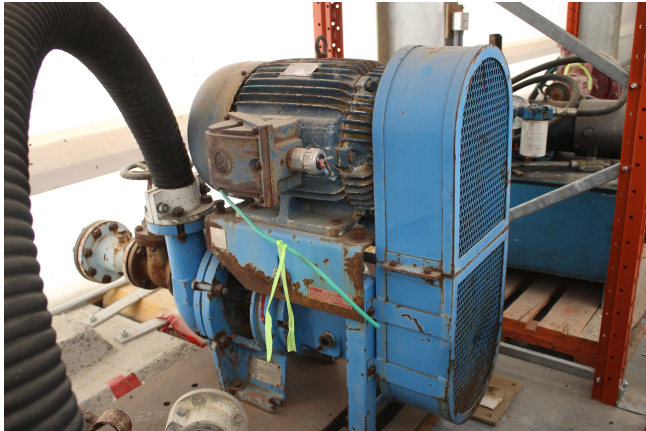


Ingersoll-Dresser 3M091 Slurry Pump [Inventory ID #1240333]



Ingersoll-Dresser 3M091 Slurry Pump

- Make: Ingersoll-Dresser Worthington
- Model: 3M091
- Type: Slurry Pump
- Suction Inlet: 3in
- Discharge Outlet: 3in
- Impeller Diameter: 9in
- Frame Size: 1
- Max Solid Handling: 0.9in
- RPM: 150
- Flow Rate: 4.5 GPM
- Rated Pressure: 139ft of Head

- [View Spec Sheet Below](#)

- Drive: TECO-Westinghouse Electric Motor
 - Power Output: 25HP
 - RPM: 1765
 - Voltage: 230/460 Volt
 - Amperage: 58/29 Amps
 - Frequency: 60Hz
 - Phase: 3-Phase

- Additional Notes:
 - Kinka 150 3 WCB Gate Valve Installed on Suction End

- Location: Western Canada

View More [Slurry Pumps](#)