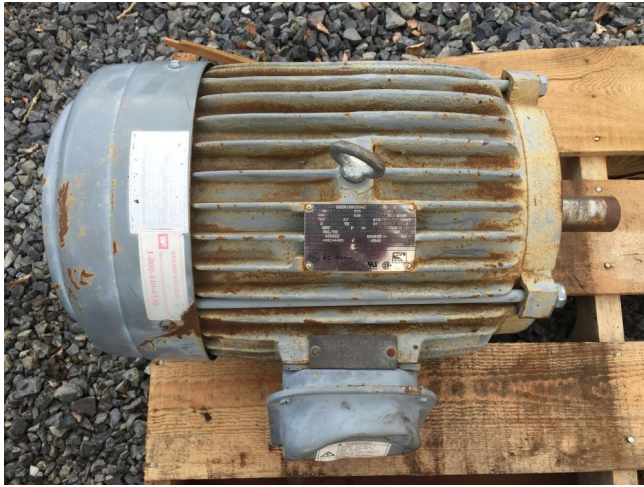


General Electric 5 hp Electric Motor

[Inventory ID #121170]



Manufacturer: GENERAL ELECTRIC

- 575V.
- 1,160 rpm.
 - 3 phase.
- Frame: 215T.
- Shipping information:
 - Dimensions (L x W x H):
 - 20 in. x 14 in. x 13 in.
 - 51 cm x 36 cm x 33 cm.
 - Weight:
 - 165 lbs / 75 kg.

Please contact us for more information.