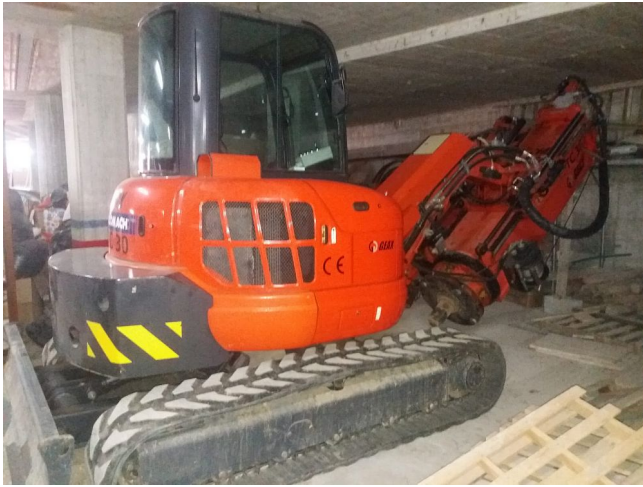


[Geax DTC 30 Rotary Drill](#) [Inventory ID #290525]



- Year: 2009
- Rubber Tracks
- Dozer Blade
- Rotary Torque 2700daNm
- Hours: 650
- Round Kelly Bars for 14.5 depth
- Square Type Kelly Bars for 15m depth
- Installed on a Eurocomach 500ZT Excavator
- Kubota Diesel Engine
 - 50 HP
- Max Pile Dia. 800mm
- Location: Europe

View more [Rotary Drills](#)