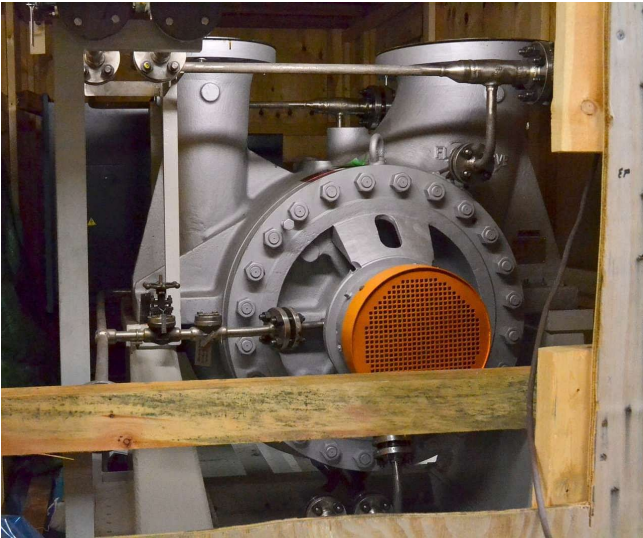


[Flowserve 14 x 10 Centrifugal Pump](#) [Inventory ID #62174]



- New with factory packaging.
- Model: 10HDX27B.
- 14 in. suction size.
- 10 in. discharge size.
- 25.7 in. max impeller size.
- 3879.8 gpm flow rate.
- 2-5/8 in. shaft size.
- 4000 V-AC voltage.
- 900 hp Reliance electric motor.
- Stainless steel construction.