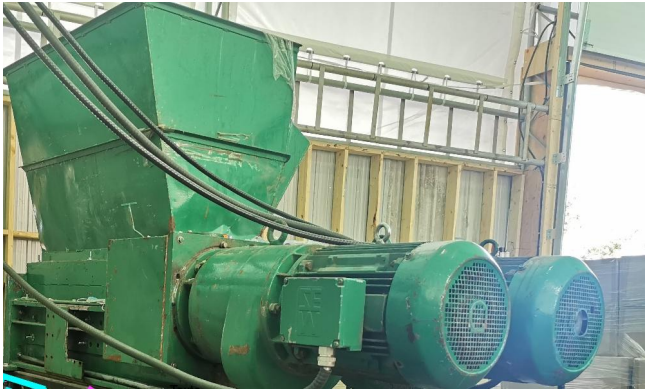


## Dual Shaft Shredder [Inventory ID #1401425]



- Type: Dual Shaft Shredder
- Previous Use: Shredding of Tires (With the Old Set of Teeth, Hours Unknown) and Shredding of Plastics (With the New Set of Teeth, 200 Hours at +350 kg/h)
- Knife Speed: 15 RPM
- Inlet Hopper: 44in x 20in
- Shredding Area: 44 x 20in
- Weight: Approximately 1 Ton
- (2) 25HP Electric Motors
  - Voltage: 480 Volts
- Included:
  - Feed Hopper
  - Transformer 600V-480V
  - Combs on Both Sides
  - Stand For Crusher - Conveyor Under Stand Not Included
  - Gearbox for Rotating Shafts
  - Complete Control Panel with Programmable Controller
  - Used Set of (24) Large Teeth - Inserts Must be Made to Fit the Re-Machined Shafts
  - Set of (74) 8in Diameter, 3-Prong Knives in H500 Steel
- Recent Repairs:
  - The Gearbox has been Rebuilt
  - Shafts have been Re-Machined
  - New Roller Bearings
  - No New Repairs Needed
  
- Location: Eastern Canada

View More [Industrial Shredders](#)