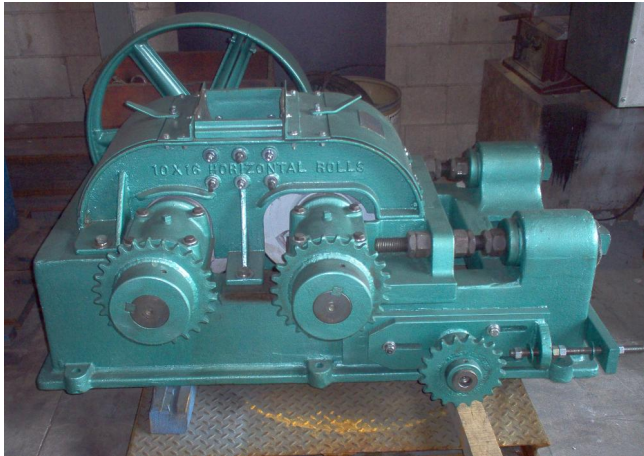


## Denver 16" x 10" Roll Crusher

**[Inventory ID #1136642]**



### Denver 16" x 10" Roll Crusher

- Make: Denver
- Size: 16" x 10"
- Roller Dia: 16"
- Roller Width: 10"
- Roller Configuration: Double Roll
- Max Feed: 0.75"
- Max/Min Discharge: 0.75" to 0.18"
- Max Capacity: 6 TPH
- Max Reduction: 4:1
- Drive: Not Included, Recommended Specs
  - HP: 6 HP
  - RPM: 200
- Overall Dimensions:
  - Length: 4'
  - Width: 2' 5"
  - Height: 2' 5"
  - Weight: 3,850 Lbs
- Location: Canada

View More [Roll Crushers](#)