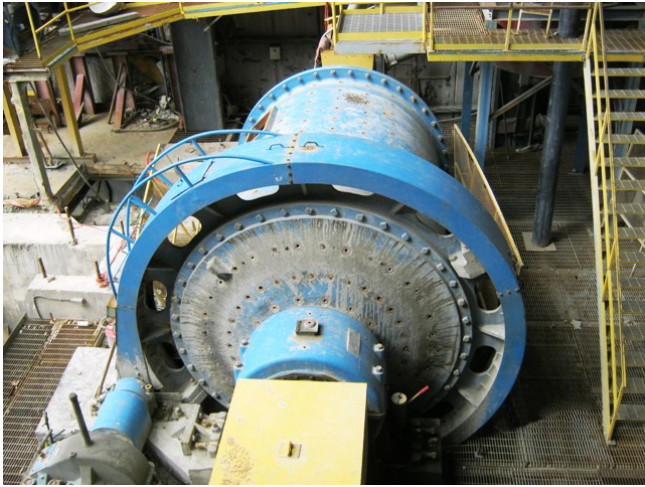


## Allis Chalmers 9 ft. Dia. x 12 ft. Long Ball Mill [Inventory ID #378501]



- Type: Wet Overflow
- Motor:
  - 1 x 500 HP
    - 2300/4160 Volts
    - 3 Phase
    - 60 Hz
    - 4731 Frame
  - 1 x 650 HP
    - 900 RPM
    - 2300/4160 Volts
    - 86 Amps
    - 3 Phase
    - 60 Hz
- Gear Reducer
  - Rapid Gear Model: SR1800 and SR1810
  - Rebuilt in 2000
- Gear Ratio: 3.19 to 1
- Shell Speed: 16 RPM
- 1 Piece Shells
  - 1 in. Shell Thickness (No Washing)
- Flange Fitted Bolted Feed and Discharge Ends
- Bull Gear:
  - Herringbone (20 in. Face) 302 Tooth
  - 2 DP
- Pinions:
  - Herringbone (20 in. Face) 22 Tooth
  - 2 DP
  - SKF Pillow Block Pinion Bearings
- Sole Plates

- Gear Covers
- No Liners

View more [Ball Mills](#)