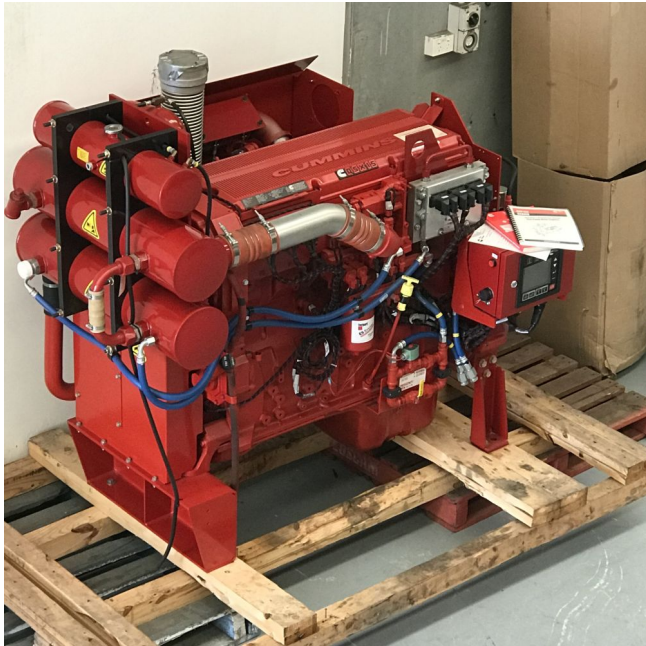


[450 HP Cummins Diesel Fire Pump Drive Engine](#) [Inventory ID #253922]



- Make: Cummins QSX15
- Model: Fire-Power CFP15E-F30
- Fire Pump Drive Engine
- Rated 450HP (336kW)
 - 1470 rpm
- 24V electrical System
- Cummins Fire Pump Digital Panel (FPDP)
- Engine Heater
- Includes:14" Industrial Silencer
- Weight: 2640 kg
- Length: 2101mm
- Width:1219mm
- Height: 1530mm
- 2 Units Available
- Location: Overseas

View more [Diesel Engines](#)