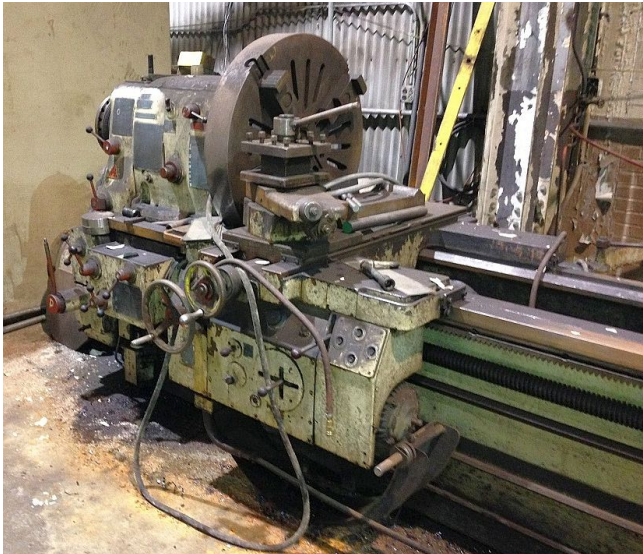


35 in x 336 in TOS SU-80-A Bed Lathe

[Inventory ID #124300]



- 35 in. x 336 in. Bed Lathe.
 - Model: TOS SU-80-A.
 - Manufactured in 1964.
 - 30 speeds: 6.7 to 1,000 rpm.
 - 48 threads: 1 to 80 TPI (threads per inch).
 - Metric threads: 0.5 to 4mm.
 - 41 Feeds:
 - Carriage: .002 to .242 IPR.
 - Cross slide: .001 to .121 IPR.
 - #6 M.T. in tailstock.
 - 4 way P.R.T. to carriage.
 - 35 inch swing over bed.
 - 26 5/8 inch swing over cross slide.
 - Complete with:
 - 25 hp electric motor.
 - 220/440V.
 - 3 phase.
 - 60 Hz.
 - Electrical controls.
 - Flamed hardened & ground bedways.
 - 4 way chuck.
 - 4 way tool post, taper and steady rest.

Please contact us for more information.