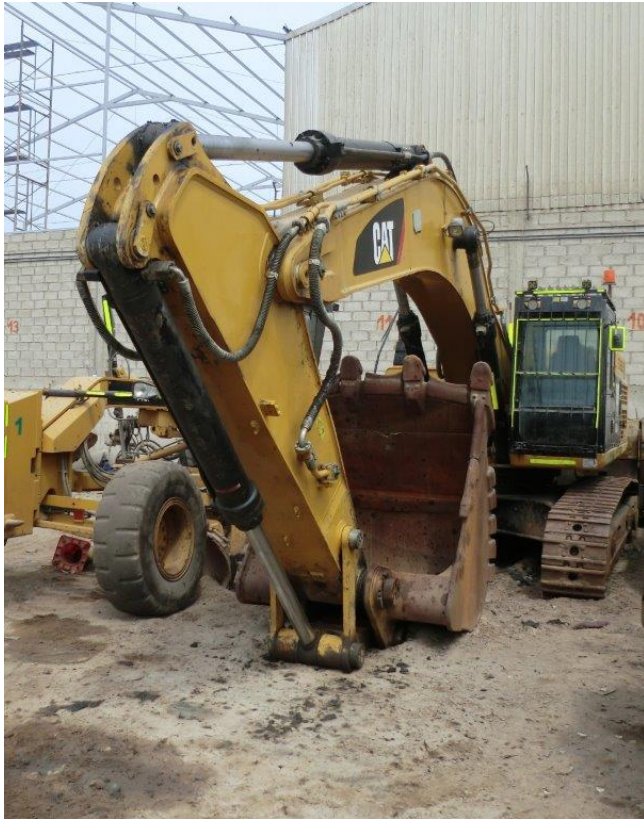


2019 CAT 349D2L Excavator

[Inventory ID #1358156]



2019 CAT 349D2L Excavator

- Make: Caterpillar
- Model: 349D2L
- Year: 2019
- Hours: 7,459
- Condition: Used, Reported in Good Condition
- Engine: CAT C13 ACERT (387HP)
- Blade: 3.21m³ Rock Blade
- Long Undercarriage
- Counterweight: 9.9 Tons
- Track Shoe: Long, Fixed Gauge 900mm Triple Grouser
- Weight: 105,600 Lbs.

- General Model Specifications:
 - Engine:
 - Engine Model: Cat C13 ACERT
 - Engine Power (ISO 14396): 403HP (301kW)
 - Net Power (SAE J1349/ISO 9249): 387HP (289kW)

- Bore: 130mm (5.11in)
- Stroke: 157mm (6.18in)
- Displacement: 12.5 Liters (762in³)
- Rating: U.S. EPA Tier 2

- Track:
 - Number of Shoes (Each Side): 52
 - Number of Track Rollers (Each Side): 9
 - Number of Carrier Rollers (Each Side): 2

- Swing Mechanism:
 - Swing Speed: 8.7 RPM
 - Swing Torque: 149 kN·m (109,896 lbf·ft)

- Drive:
 - Gradeability 30°/70%
 - Maximum Travel Speed: 4.5 km/h (2.7 MPH)
 - Maximum Drawbar Pull: 338 kN (75,985 lbf)

- Hydraulic System
 - Main System – Max Flow (Total): 734 L/min (193 Gal/min)
 - Max Pressure – Equipment: 35,000 kPa (5,076 PSI)
 - Max Pressure – Travel: 35,000 kPa (5,076 PSI)
 - Max Pressure – Swing: 31,400 kPa (4,554 PSI)
 - Pilot System – Max Flow: 43 L/min (11.3 Gal/min)
 - Pilot System – Max Pressure: 4,110 kPa (596 PSI)

- Location: South America

View More [Large Excavators](#)