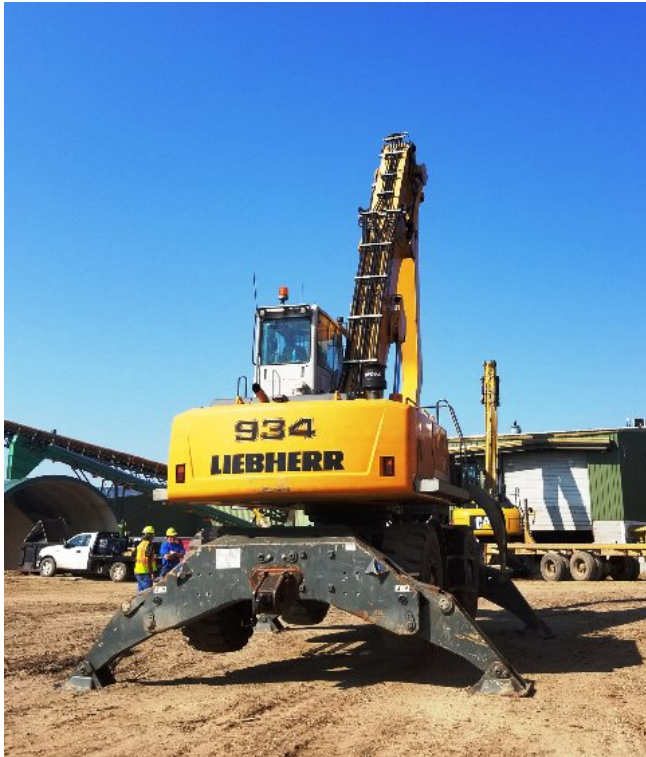


## 2012 Liebherr A 934 CHD Material Handler [Inventory ID #218854]



- Hours: 22,317.
- Operating weight: 36,450 – 37,650 kg.
- Model: A 934 C HD Litronic.
- Liebherr D 934 L Engine.
  - 0 L.
  - Tier 3.
  - 4 stroke diesel.
- Transmission: 2 spd powershift + 4 creeper speed.
- Swing drive:
  - Liebherr swash plate motor with integrated brake valves.
  - Torque: 84 nm.
  - Speed: 8.2 RPM stepless.
- Fully enclosed Operator's Cab.
  - Elevation: 6 ft. riser.
  - Rear view camera.
- Reach/Stick:
  - 24 ft. 11 in. boom.
  - 19 ft. 8 in. stick.
- 4 independent hydraulic outriggers.
- Tires: 20.5-25.
- Located: Eastern U.S.A.



P.O. Box 176, Savona, BC, Canada V0K 2J0  
Phone: (250) 373-2424 Fax: (250) 373-2323  
Website: savonaequipment.com  
Email: sales@savonaequipment.com  
Located just 20 minutes west of Kamloops, BC

---

View more [Log Loaders](#)