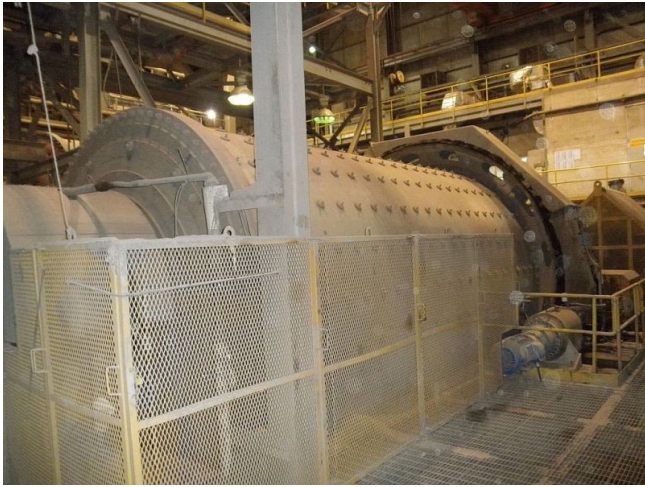


Allis Chalmers 13ft x 21ft Svedala Ball Mill

[Inventory ID #45719]



Allis Chalmers 13ft x 21ft Svedala Ball Mill

- Size: 13ft. Dia. x 21ft. Long
- Rubber Lined
- New in 1979
 - Completely Rebuilt in 1998
- 2,000HP Synchronous Electric Motor
 - Voltage: 4,000 Volt
 - Speed: 200 RPM
- 253 Tooth Bull Gear
- 21 Tooth Pinion Gear
- Eaton Airflex Clutch
- Trommel Discharge with Lube System
- Ball Mill Rejects Conveyor
- Equipment Dismantled and Stored at Crane Yard